

Enjoy your stay at
Maison de l'épicurien!



Our **detached** holiday home Maison de l'épicurien is located in a green, picturesque area **Petigny**. The **new-build home** offers every **comfort** and is suitable for one family holiday, a weekend with friends, an outing with colleagues,... . Just get away from all the hustle and bustle! Your **four-legged friend** is also interested very welcome.

Open the gate and drive into the **driveway** of Maison de l'épicurien. The wagon and the bicycles can be parked safely in the **garage**. You will also find it there **infrared cabin** back, wonderful during the cold winter months.

You reach the living area via the stairs in the garage. In the **storage room** is the **washing machine** and feel free to take some toys, board games and comic strips from the closet.

Anyone who enters the house through the front door enters the **hall with toilet**. Then you enter the well-equipped **kitchen** (equipped with... oven/microwave/spacious refrigerator with freezer compartment and dishwasher) and the attractive **living room** (with wooden ceiling) inside. The **gas heater** takes care of that during chilly winter evenings for extra coziness. The **terrace** is via the sliding windows easily accessible. Enjoy the sun to the fullest!

The wooden stairs lead you to the top floor with **three bedrooms** and **two bathrooms**. Both the largest bedroom and the medium-sized bedroom have a **double bed**. The smallest bedroom is equipped with a **single bed** and a **bunk bed**. The littlest ones can go in a travel cot sleep in the room of the (grand)parents. The largest bathroom has a **bath**, a double sink and a toilet. Those who prefer to enjoy a **shower** are welcome in the other bathroom.

The **location** offers the ideal base for exploring its various assets village and surroundings to discover. Both the adventurer, the sports enthusiast, the... Quiet nature lovers and families with (small) children can enjoy themselves there. And don't forget: a real épicurien can be in one of the many culinary delights in restaurants.

Be surprised by everything that the small but lively village of Petigny has to offer has to offer!

Contact details

addresses: Rue Reposoir 101 - 5660 Petigny

gsm Roel: 0499/46 93 63 - gsm Sylvie: 0494/89 93 34

telephone Johan & Betty: 053/62 24 72

e-mail: maison.de.lepicurien@outlook.be

website: www.maisonlepicurien.com



house.of.lepicurien

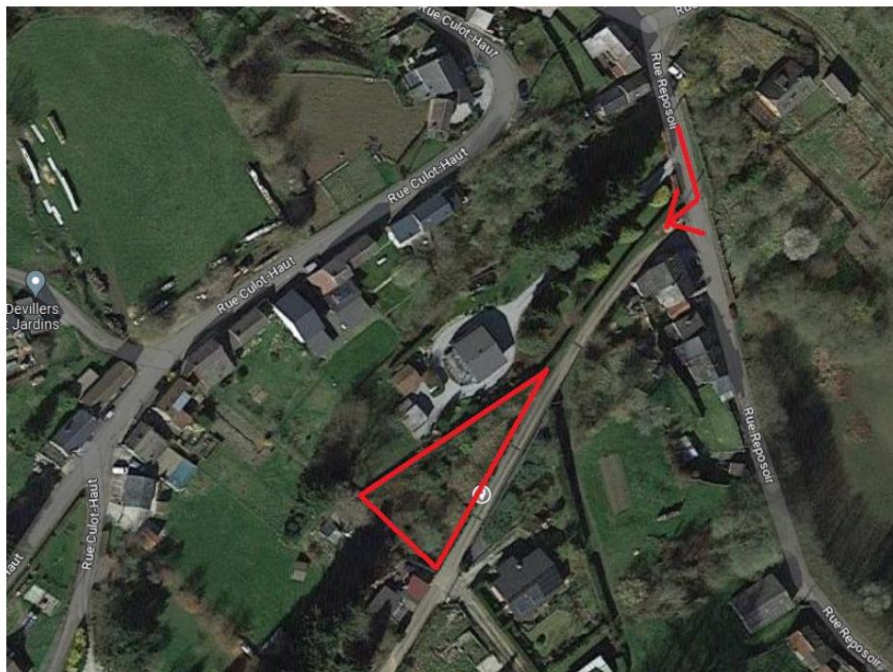


House of the Epicurean



Directions

Coming from the N5 - E420 towards Reims, take the N99 exit Couvin-Centre/Viroinval/Petigny. At the roundabout take the 3rd exit onto Rue General de Monge/de N99. Sla na 1.9 km rechtsaf naar Rue des Fontaines om then after 350 m follow the road to Rue Culot-Haut. At 170 m, on the junction, follow left Rue Reposoir. Then keep right and turn into the first street right upwards. Maison de l'épicurien is on your right.



Prices

	weekend	just the weekend	midweek	week
low season	€ 250	€ 330	€ 440	€ 770
high season	€ 300	€ 405	€ 540	€ 945

reservation from 2 nights

prices **include** consumption of water, electricity and heating (if none disproportionate consumption)

prices **excluding** mandatory final cleaning €50

high season: June – September + school holidays (Flanders) and public holidays

Christmas holidays: price on request

weekend: Friday 4 p.m. – Sunday 4 p.m

long weekend: Friday 4 p.m. – Monday 4 p.m

midweek: Monday 4 p.m. – Friday 11 a.m

week: Friday 4 p.m. – Friday 11 a.m

Book online

View the availability of our holiday home and record the reservations can be made via the website. The reservation is only final after confirmation receipt of the advance payment.

Information regarding the reservation

• Arrival from 4 p.m., access via door lock code, to be received on the day of arrival

• Departure before 11 am (midweek or week) or 4 pm (weekend or long weekend)

• Rental prices include consumption of water, electricity and heating (if this is not disproportionate consumption, such as charging a car).

• Mandatory final cleaning: €50

• Advance payment to be made upon reservation (50% of the rental amount, within 7 days) The remaining rental amount and the deposit of € 300 are required

Payment must be made 3 weeks before the start of the rental period.

• Max. 2 dogs allowed

• **Bed and bath linen are not provided.**

• The house is suitable for people who want to enjoy the beautiful nature and tranquility. The location is not suitable for music and loud parties.

• View our house rules, also interesting regarding sorting waste.

Key assets

Pet



2 dogs allowed

Facilities

• spacious storage room with washing machine

• 2 toilets (1 downstairs in the hallway / 1 on top of the bathroom)

• living room with television and gas heater

• kitchen: 4 hotplates, oven, microwave, refrigerator with freezer, dishwasher, coffee maker (filter), kettle, toaster, mixer, croquettoestel, gourmettoestel

Leisure facilities

• wifi

• gas heater

• darts

• ping pong tafel

• play table for children

• trampoline (up to 50kg)

• infrared cabin

• barbecue

Bedroom and bathroom

3 bedrooms



2 bathrooms



• bedroom: double bed (180x200)

• bedroom: double bed (180x200)

• bedroom: 1p bed + bunk bed

• baby bed

• bathroom: bath, double sink, toilet, hairdryer

• bathroom: shower, 1 sink

• ventilators

• fly screens

Outside

• parking: closed driveway + garage • enclosed private

garden • private terrace

with garden furniture and pallet benches

Below you will find a brief summary of the **sights**

the (spacious) neighborhood and **photos** from our private archive. You will soon see why we lost our hearts to Petigny!

More (construction) photos can be found on Instagram & Facebook.



house.of.lepicurien



House of the Epicurean

Petigny

Petigny is a sub-municipality of Couvin and is located in the province of Namur.

Petigny, also called 'the village of stone and water', owes its name to its...

geographical location. The village is located in a hollow valley, formed in the

limestone cliffs, where numerous springs originate and many rivers flow their way

jobs. You can visit Neptune's caves and there

depart several walks.

<https://tourisme-couvin.be/nl/onze-dorpen/petigny/>



During the weekend closest to August 15, the folkloric St. Victor's parade, a religious procession accompanied by participants in military uniforms of yesteryear.

The brass band is present at every festive event!



Caves of Neptune

The guide will take you for 50 minutes in an extraordinary setting.

Little ones and adults, love the underground world or looking for one unique experience, will be delighted with the boat ride on the underground river and the sound and light show.

It is strongly recommended to purchase tickets in advance via the website!

<https://grottesdeneptune.be/nl/>

Nearby: Couvin

Relaxation options

ÿ Flybowl: bowling, indoor playground

<https://www.facebook.com/Flybowlcouvin>

ÿ karting

<https://www.kartingdesfagnes.be/>

ÿ winkelen in La Couvinoise

<https://lacouvinoise.be/>

ÿ zwembad (Couvin swimming pool)

<https://www.facebook.com/PiscineDeCouvin>

Ry of Rome



The reservoir of the 'Ry de Rome'

(Ry = small river) contains 2,200,000m³

water and is supplied by 3 rivers:

from 'Ry de l'Hermitage', from 'Ry des Serpents'

and the 'Ry de Rome'. The history of

this dam started in 1941. To keep crossing

sufficient drinking water with a constant

flow rate, even in

periods of drought, the

municipalities of Couvin, Dailly and Presgaux a

to establish an intermunicipal water company and build a dam on it

protected area of the 'Ry de Rome'. The dam was completed in 1975

later also adapted to the applicable quality standards with the construction of a

water treatment plant. The walk around Ry de Rome is through it

asphalted walking path completely buggy-proof.

<https://tourisme-couvin.be/nl/project/le-ry-de-rome-nl/>

100 horses on the grass

Here 'rescued' horses, ponies and donkeys are brought together, cared for and cared for taken care of. **Only open on Sunday afternoon, from 1 p.m. to 5 p.m.!**

<https://100chevaux.org/>



Nearby: Brûly-de-Pesche

The military and historical memorial site Brûly-de-Pesche 1940

The bunker where Hitler stayed during the Second World War is in an open area place in an Ardennes forest in the province of Namur. You can do this one stunning memorial site also visit. In Brûly-de-Pesche, near the French border, Hitler set up his headquarters to invade France June 1940 to coordinate. The site is also called the Wolfsschlucht and still bears the traces of Hitler's stay. There is one in the bunker concrete air raid shelter that is accessed through two armored doors and there are also two Bavarian-style chalets where the führer and his officers stayed.

<https://visitwallonia.be/nl/content/bunker-van-hitler-bruly-de-pesche-bijzondere-plek-belgie>

The military and historical memorial site Brûly-de-Pesche 1940 is particularly impressive because of its simplicity and authenticity.

At the end of May '40, the Occupying Power built a military headquarters (GQG) there and on June 6 A. Hitler settled here to conduct the second phase of the Battle of France prepare. Hidden in the undergrowth, in the Wolf's Ravine, a chalet is being built and a bunker, while the Resistance continues in the surrounding forest organize more effectively...

Through a model, films and objects from that time and thanks to interactive tablets, visitors can get an idea of how the villagers are occupied polite. In the center of the village of Brûly-de-Pesche and in the park are also information boards installed.

<https://tourisme-couvin.be/nl/project/bruly-de-pesche-1940/>



Nearby: Viroinval

Viroinval is a municipality in the Ardennes and consists of the following villages: Nismes, Dourbes, Treignes, Mazee, Vierves, Olloy, Oignies en Le Mesnil. In total the municipality has more than 5,500 inhabitants. The municipality is named after the valley of the Viroin.

Tourists looking for peace and nature can have peace of mind travel to this area. Beautiful cycling and walking paths, beautiful nature and... small restaurants where you can enjoy local food for little money specialities.

<https://ardennen.nl/dorpen/viroinval/>

Nearby: Nismes

Foundry of Dogs

In the natural park of Viroin-Hermeton, near Nismes, lies Fondry des Chiens, a protected and unique place in Belgium.

The nature reserve of the Fondry des Chiens is a true masterpiece of the nature and **unique in Belgium**. That's why the area has been declared protected and is it is an official natural monument.

The Fondry des Chiens is a natural one hole created by rainwater seeping through the limestones soil. Due to the play of the water over millions of years, there is one gigantic pit more than 20 meters deep. These natural potholes are called Fondries. It really is a beautiful place to see because you definitely don't expect it in this landscape. Jagged rock, crevices, caverns and rainwater that keeps dripping. In the During the summer months you will see lizards basking in the sun impressive rocks.

We have already visited this 20 meter deep sinkhole with incredible biodiversity several times. Worth it!



<https://ardennen.nl/wandelen/fondry-des-chiens-in-nismes/>

The gardens of O



In the heart of Nismes we invite you castle and its completely renovated park out for a walk.

We sometimes walk from Petigny to Nismes along the Eau Noire river (about 40-45 minutes of walking).



Les jardins d'O has not stolen its name: one river, canals, a pond, a fountain and waterfalls characterize the park. You can too relax in the playground and mini golf. A trip making it with a paddle boat is during the summer months also an option.

<https://www.viroinval.be/fr/loisirs/tourisme/office-du-tourism/explore/attractions-entertainment/les-jardins-do-de-nistes>

Nearby: Treignes

Stoomtrein 3 valleys

The railway museum of Treignes presents its collection "from time" for: a testimony of the railway history of our beautiful country!

Discover with family, friends or solo fantastic locomotives that take you on a journey of

the great age of steam to

electricity. The oldest locomotive dates from 1894!

Numerous thematic showcases tell you the secrets of kepis, lanterns,

tools and other objects related to the world of trains

to have. You will travel through our beautiful region with an authentic steam train.

Special train rides in theme: Halloween, Easter, Christmas



<http://site.cfv3v.eu/site/musee/>

States of Donkeys

Donkey walks: Nothing as relaxing and soothing as a walk... with a donkey. We offer guided walks with one or two donkeys.

Walks from half an hour to a full day in the heart of our beautiful villages and the beautiful nature of Viroinval. You will be given the opportunity to appeal of donkey herding and to better understand this beautiful animal.

Donkey bar: An original cafeteria where the donkeys, at their own discretion, can be found among the visitors walking around.

<https://www.viroinval.be/nl/ontspanning/toerisme/toerismekantoor/verkennen/attracties-animaties/etats-d2019anes>



From the newspaper

Two new national parks are located on Sambre, Meuse in Semois

Not the High Fens, but the valleys of the most important Walloon rivers win recognition, a lot of fame and a hefty budget as national park.

Peter De Lobel

Saturday December 10, 2022

In addition to the Hoge Kempen National Park, there is now also L'Entre-Sambre-et-Meuse and Vallée de la Semois national parks. Both areas receive from the Walloon government 13 million euros in additional support, plus 1.4 million euros for the expansion of tourism.

It is not about isolated forests where commercial activities or hunting occur are prohibited. The nature reserves have no clear demarcation. Like the name suggests, L'Entre-Sambre-et-Meuse is located between the Sambre and the Mesh. It covers about 22,000 hectares and the municipalities of Viroinval, Couvin, Chimay, Froidchapelle and Momignies are part of it. The tourist attraction Les Lacs de l'Eau d'Heure falls within the area, just like the Fondry Dogs.

The latter can count as a piece of natural beauty. There are big ones in the middle of a forest pieces of limestone worn away by the water. The result is a deep hole the hill plateau, in which parts have disappeared. What remains are enormous upright rock formations.

https://www.standaard.be/cnt/dmf20221209_97803593

A little further from Petigny

Chimay (19 km)

• Chimay Experience & Scourmont Abbey

We have already visited Chimay Experience, walked through the forest to the abbey Scourmont and enjoyed a fresh one in the brasserie Chimay with tasty cheese croquettes.



In 1850, a dozen monks settled there Westvleteren on the Scourmont plateau doing what they continue to do to this day do: “help the region around Chimay”. To accomplish this task, they decided to produce a beer based on the water they had in abundance draw from the nature of these swampy plateaus. Opened a few years later they run the cheese factory. In this beautiful region you can enjoy a true... discovery, but also of relaxing moments or moments of pure tranquility in the courtyard or in the gardens and church of the abbey. Chimay Experience welcomes you for a trip to the heart of the secrets, history and treasures of Trappist beers and cheeses Chimay. More than a century and a half of tradition, authenticity and know-how on it field of beer brewing. At the end of the visit, you will be offered a Chimay (25 cl) in the Espace Chimay café.

The Auberge de Poteaupré, the café-restaurant-hotel of Espace Chimay, is one excellent starting point to discover the treasures in and around Chimay. Come and taste all the aromas of our Trappist beers and the flavors of the cheeses that belong to it.

<https://chimay.com/nl/espace-chimay-4/>

• The Abbey Treasure – Chimay Escape Room

Information and reservation via the website <https://chimayescaperoom.be/>

Reservations are necessary! Address: Hotel de Ville, Grand'Place, 6460 Chimay

Chimay Castle

Discover the history of the Château de Chimay and its inhabitants, past and present, through the film "Secrets de Chimay" which was released in the Maison des Artistes is shown. Afterwards you can continue your visit in complete freedom via a mobile application in the Castle: Entrance hall, Armory, Thierry Bosquet room, Portrait Room, Winter Garden, Chapel and the Theater classified as Exceptional Heritage of Wallonia. Then visit the souvenir shop.



After our visit, Roel tasted a green Chimay. The Christmas market is also worth a visit in December.

<https://chateaudechimay.be/nl/>

Hour Water Lakes (25 km)

The Lakes of the Eau d'Heure are artificial lakes in Wallonia the flow of the Eau d'Heure. They originated in the 1970s the twentieth century. The lakes with a combined surface area of 6.17 km² form the largest water area in Belgium, located approximately 30 km south of Charleroi, partly in the province of Namur (municipality of Cerfontaine), partly in Hainaut (municipality of Froidchapelle). There are five lakes in total with a joint bank length of 70 km.

wikipedia.org



Photo taken from Ferris wheel (summer holidays 2021)

Discover the lake in an Amphibus. Cycle around the lakes via the RAVel. Take it small tourist train. Discover the surrounding nature. Go on an adventure in the trees and on the mountain bike. Immerse yourself in the tropical atmosphere of it Aquatic Park. Relax in the Wellness Center. Eating and dining in peace drinks. Take advantage of the various playgrounds. Go windsurfing, kayaking, paddle boarding, sailing, jet skiing, water skiing, diving,... . At the Lacs de l'Eau d'Heure, everything becomes possible to create an unforgettable moment experience.

<https://www.lacsdeleaudheure.be/>

Lake Vieilles-Forges (29 km)



A 26-minute drive from Petigny we discovered a beautiful lake, Lac Des Vieilles-Forges. We opted for the peace and nature and walked around the lake (11.8 km). Most of the walk was through woodland with plenty of it places where Fara, our dog, could cool off in the lake. Of course the Water lovers among us have come to the right place: there are numerous water activities possible. Definitely worth a visit!



The Vieilles-Forges lake, in the heart of the forest, a few kilometers from the Meuse Valley, is the ideal place to enjoy a moment of relaxation and recreation in a beautiful environment.

This unique nature reserve, consisting of a forest area of 1000 hectares and a lake of 150 ha, allows many activities such as swimming, canoeing and kayaking, fishing or hiking.

The Domain of Vieilles-Forges welcomes 280,000 visitors every year.

It is today considered the most important tourist attraction in the Ardennes.

<https://www.lacdesvieillesforges.fr/nl>

Beauraing (36 km)

The village of Beauraing is beautifully situated in the Ardennes and known throughout the country Benelux. Beauraing, located in the hills, is a place of pilgrimage.

Of all the pilgrimage sites in the Ardennes, this one is the most visited.

The village is located on the road from Dinant to Bouillon.

Beauraing became a place of pilgrimage in 1932. In that year the Holy One appeared Virgin here in a cave to five children. The Blessed Virgin pressed the wish that a shrine would be built on the spot. This wish was fulfilled of course heeded. The big news quickly spread throughout the Benelux so that in no time the village was flooded with tourists. Today the village is still busy. Especially in August and September Beauraing is very busy. Pilgrims from all over world visits the cave, the Marian Museum and the pilgrimage center.

<https://ardennen.nl/dorpen/beauraing/>

France

The following places are definitely worth a visit.

Given (26 km)

We sometimes do our shopping in Intermarché. You can go there during the holidays buy many treats.

Givet, located on the Meuse and crossed by the Houille river, is French city in the heart of the Ardennes with a remarkable geographical location and an empire urban and historical heritage. Givet is the perfect combination of history and modernity.

<https://www.visitardenne.com/nl/het-beste-van-de-ardennen/top-bestemmingen/steden-en-dorpen/givet>

Charleville-Mézières (48 km)

Charleville-Mézières, located in the south, is the capital of France Ardennes. The city has been a trading hub since the Middle Ages Northern Europe and France. The city was founded in 1606 by an Italian prince, Carlo I Gonzaga, who gave the city its Italian design and pure Baroque style gave. The city breathes art and history. It happens every two years World Festival of Puppet Theaters organized and the city is home to a of the few puppet schools in the world. However, there is much more to do experience. Get to know the life and brilliant work of Arthur Rimbaud, the poet born in Charleville in 1854, in the museum dedicated to him, the Maison des Ailleurs and the Voyelles media library.

In the beautiful Musée de l'Ardenne you can completely immerse yourself in the history of the region.

Charleville-Mézières is the prefecture of the Ardennes department. The double city consists of the parts of Charleville and Mézières, which were closed on October 1, 1966 have been merged. The prefecture also consists of the villages of Etion, Le Theux, Mohon and Montcy-Saint-Pierre. The city extends along three meanders the Meuse and leans against the Ardennes massif. The river determines the geographical layout and history of the city; it forms the border of neighborhoods that are alone

connected via bridges. Those used to be bridges used as a defense against raids by enemy forces. The Maas grew. However, it quickly developed into an important trade channel. Take your time on one of the many terraces of the beautiful Place Ducale square to sit down.

<https://www.charleville-sedan-tourisme.fr/decouvrir-charleville-sedan-en-ardenne/decouvrir-charleville-mezieres/>

Reims (120 km)

This city is one of the most interesting cities of art and history and owes its fame to the cathedral and its associated buildings memory of the coronations of the French Kings and champagne, as many important champagne houses have their headquarters here. You must also remember that the cathedral, the Palais du Tau, the Abbey and Saint-Remi Basilica is a UNESCO World Heritage Site.

<https://www.champagne-ardennen-toerisme.nl/ontdekken/weekend-de-stad/reims>

Where in France do you need an environmental vignette?

The environmental vignette is only mandatory in certain zones in France (de permanent low emission zones, ZFE). Besides Paris also have several other major cities have introduced permanent low-emission zones (ZFE). It is also here the environmental sticker is mandatory. **These are Lyon, Aix-Marseille, Toulouse, Nice, Montpellier, Strasbourg, Grenoble, Rouen, Reims and Saint-Étienne.**

From 2025, all cities with more than 150,000 inhabitants must have a permanent one enter a low-emission zone.

Since January 1, 2023, vehicles in category 5 and vehicles no longer access to a permanent low-emission zone without a sticker.

In some cities this also applies to category 4 vehicles. A few cities offers passes that allow occasional drivers a limited number can visit the city center once a year.

Reims: ban for category 4 and 5 vehicles.

<https://www.france.fr/nl/bereid-je-reis-voor-naar-frankrijk/milieuzones-frankrijk-ecovignet-critair>

For the walkers

Hiking trails

Use the booklets from the Office du Tourisme Couvin.

Please put them back after use so that the next guests can use them to use.

The following websites can also provide inspiration.

<https://tourisme-couvin.be/nl/wandeltochten/>

<https://www.facebook.com/tourisme.couvin/>

<https://www.routeyou.com/nl-be/location/routes/47490865/petigny?route-type=2>

<https://www.komoot.com/nl-nl/guide/656441/wandelen-rond-couvin>

<https://nl.wikiloc.com/routes/wandelen/belgie/waals-gewest/petigny>

Hunt

Be careful during hunting season! It is best to consult the hunting calendar in advance.

<https://tourisme-couvin.be/nl/ontdek/jachtkalender/>



Our Labrador Fara also enjoys the walks we take. You can take beautiful walks during any season.

For the cyclists

Use the booklets from the Office du Tourisme Couvin.

Please put them back after use so that the next guests can use them to use.

Mountain bike trails

The following websites may provide inspiration.

<https://www.komoot.com/nl-nl/guide/656442/mtb-routes-rond-couvin>

<https://www.routeyou.com/nl-be/route/view/1934174/fietsroute/mtb-couvin>

<https://www.alltrails.com/nl-nl/belgium/namur/couvin/mountain-biking>

Cycling routes

The following websites may provide inspiration.

<https://www.komoot.com/nl-nl/guide/656443/wielrenroutes-rond-couvin>

<https://www.komoot.com/nl-nl/guide/656444/fietsroutes-rond-couvin>

<https://www.routeyou.com/nl-be/location/routes/47408021/couvin?route-type=1>

Hunt

Be careful during hunting season! It is best to consult the hunting calendar in advance.

<https://tourisme-couvin.be/nl/ontdek/jachtkalender/>

Food & drinks

We love good food and drinks, real épicuriens. The following addresses

we tried it out ourselves. From a cone of fries to an authentic brasserie to a restaurant with a Michelin star, there is something for everyone!

Petigny

ÿ Friterie Nath with fries

ÿ Route 99 Friterie

Couvin

ÿ Nowhere Else (Michelinster)

ÿ Brasserie des Fagnes (very well known / popular with tourists / ideal with children,
both indoor and outdoor playground)

ÿ La Thiérache (modern interior on terrace)

ÿ Brasserie Jeanne (on the village square)

ÿ L'absolu (delicious fondue/ wide choice)

ÿ Tacos & Burgers area

ÿ La Dolce Vita / Al Kasbah (mainly pasta, pizza, couscous)

ÿ Le Loft (gelegen aan La Couvinoise)

ÿ Mc Donalds (gelegen aan La Couvinoise)

Nismes

ÿ La Bonne Auberge (more refined cuisine, cozy interior, quite well in advance
to book)

Olloy-sur-Viroin

ÿ Les Quat'Voyes (well-maintained interior, tasty, recommended: truffle ardennaise)

Treignes

ÿ Le Montjoie (homely, cozy and delicious)

Chimay

ÿ El Greco (small restaurant, tasty Greek dishes)

ÿ Auberge de Poteaupré, the café-restaurant of Espace Chimay (outdoor playground)

ÿ L'eau Blanche (located in Lompret, authentic restaurant, cozy)

ÿ L'ère d'étangs (located in Forges, tasty and well-maintained, cozy interior, nice
terrace with playground with a large pond below)

Shops nearby

Bakery

ÿ Little Thumb's Delights

Down in the village there is a traditional bakery with a lot of delicacies. (closed on Tuesdays and Wednesdays) (feasible to go to the bakery to walk)

ÿ The Workshop (Couvin)

Butchery

ÿ Boucherie Matthieu & Gwendoline - Rue de la Falaise 41, 5660 Couvin

ÿ Boucherie Spieschaert - Place Marie de Hongrie 4, 5660 Mariembourg

ÿ Boucherie Leonard - Rue Saint-Roch 6, 5670 Viroinval

ÿ Boucherie La ferme du Crestia – au Crestia 5, 5680 Doische (also glacerie)

Fish shop

ÿ Escavir - rue Jean Chot 35, 5670 Olloy-sur-Viroin

Supermarket

ÿ Okay Viroinval - Rue Albert Grégoire 73/ at 2.5 km

ÿ La Couvinoise: Delhaize & Lidl

ÿ Aldi - richting La Couvinoise, Rte Charlemagne 23

ÿ Comarché – Rue de la gare 15 – Couvin

La Couvinoise

You will find several shops such as Kruidvat, Zeb, Jysk, Point Carré, Pronti, etc.

You will also find supermarkets Lidl and Delhaize there.

Delhaize has its own butcher shop where you can find delicious, fresh meats and cheeses can buy. During the game season you will find a wide range of delicious ones game pates.

Comptoir des Fagnes

In this store you will find various products and specialties. You will find there beers, wines, aperitifs, food, frozen products,...

You can obtain drinking troughs through the drive-in.

Market

ÿ In Couvin op woensdagvoormiddag (Place Général Piron)

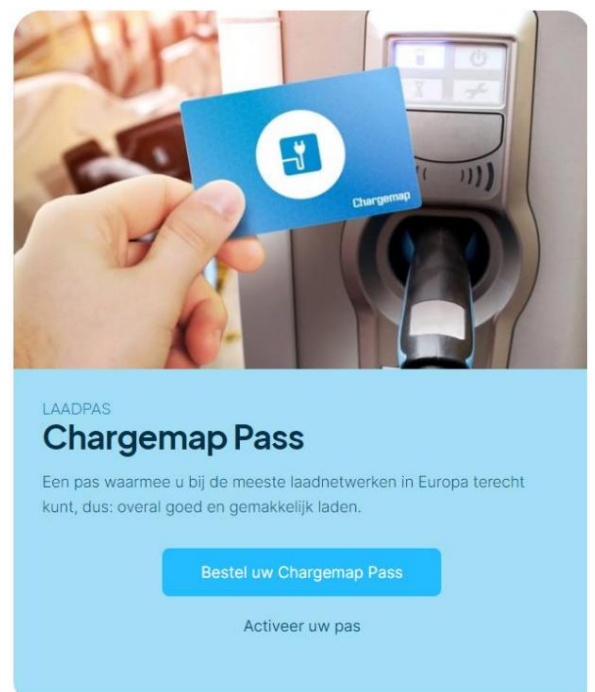
ÿ In Mariembourg on Sunday morning (Place Marie de Hongrie/during the summer very nice to sit on a terrace afterwards)

Extra info

Charging points



<https://nl.chargemap.com/>



Have your electric car charged in Couvin, this place has 13 charging stations. With the Chargemap map shows you where you can find these charging stations in Couvin. You can see in which neighborhoods the most charging stations can be found in Couvin or in one of the places nearby: Couvin, Froidchapelle, Sivry-rance, Philippeville, Vireux-wallerand, Revin, Bourg-fidele, Fumay, Haybes.

<https://nl.chargemap.com/cities/couvin-BE>



Glasbol (Rue des Monts)

Drive to the bakery and cross the N99. Drive straight across the bridge and something further on on the left (at the football field) are the glass bottles.



Playground

There is a very small playground in front of the bridge. Over the bridge, a little further the glass balls, there is a second playground.



You will also find a small playground at Les grottes de Neptune.



Medical info

Emergency numbers



112: ambulance and fire brigade



101: police



1733: doctor on call



0903 99 000: pharmacy on-call service (€ 1.5/minute) or www.apotheek.be



070 245 245: antigifcentrum

Pharmacy

Family Pharmacy

Rue la Couvinoise 5

5660 Couvin

Denamur Pharmacy

Long Street 12

5670 Nismes

Hopital

Fagnes Health Center

Boulevard Louise 18

6460 Chimay

Veterinary surgeon

Veterinary clinic

Chemin Try Chalons 15

5660 Couvin

(just before McDonald's, follow the road to the left)

Sign – warning for humans and animals

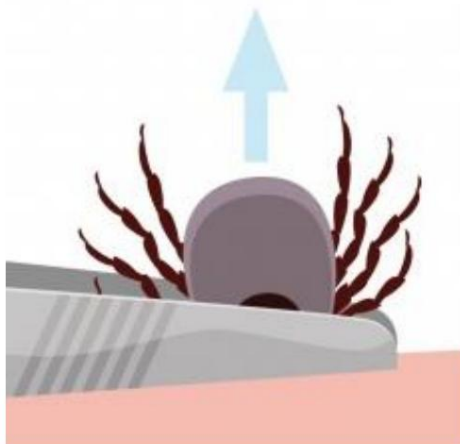
How do I remove a tick?

Remove a tick as quickly as possible! The longer the tick is in your skin, the bigger it becomes the chance of transmitting pathogens.

Tick removers/tweezers are provided in our first aid kit.



Grasp the tick as close to the head as possible with tweezers.



Pull the tweezers with the tick up, do not twist

Pull up, don't turn.

Do not use alcohol, iodine, oil or other substances before removing the tick deleted.

Grasp the tick near the head as close to the skin as possible with pointed tweezers and gently pull it out. If a piece of the head remains in the skin, that's it harmless. It will come out on its own, just like a splinter. Disinfect next the bite wound.

Hogweed – warning for humans and animals

What is the hogweed?

In Belgium there are two types of BEAR Claws, namely the giant hogweed and the common or native hogweed. The giant hogweed grows to a height of 5 meters and has umbrella-sized, white ones between July and September flower umbels with a diameter of up to 50 cm. The enormous leaves are hairy and the stem is spotted red.

The common hogweed has no red spots on the stem and only grows to 2 meters high.



Symptoms

About 24 hours after contact with the sap, red, itchy spots appear, which a few hours later turn into a sharply defined inflammation of the skin with swelling and blistering. These lesions may look like real ones burns and only heal after 1 to 2 weeks. After healing they can have a leaving brown discolouration (hyperpigmentation) of the skin. If the juice in the ends up in the eyes, permanent blindness can occur in some cases.

What do you do after contact with the plant?

Rinse immediately with plenty of cold water.

Avoid the sun for one week.